



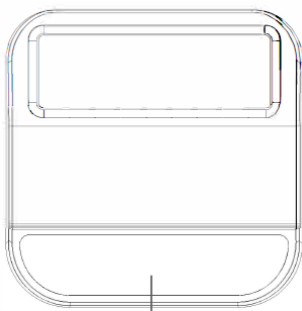
MP11 Outdoor Siren User Guide - EN

This product is work with alarm system iGET M6 to give an audible and visual alarm, when the intruder entered without permission.

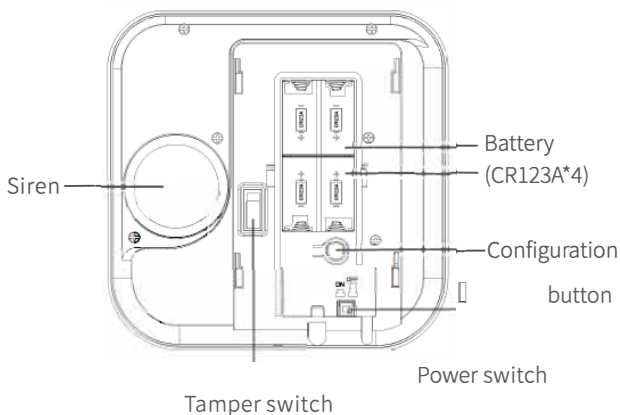
Packing list

- Wireless outdoor siren(1x)
- Expansion pipe(4x)
- Bracket(1x)
- BatteryCR123A(4x)
- Instruction manual(1x)
- Screw(4x)

Product appearance



Flashing light semitransparent



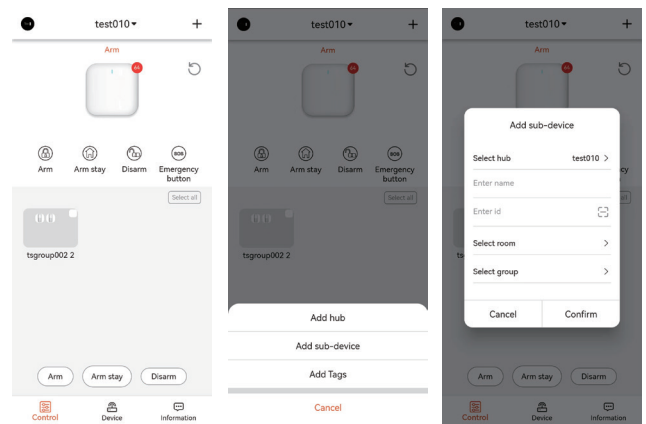
Technical parameters

Wireless Protocol	FSK
Wireless Frequency	868 MHz
Transmission Power	≤13dBm
Working Voltage	DC12V (optional, if buy a power adaptor)
Wireless Distance	800m/500m (in an open area)
Working Temperature	-25°C~+70°C
Working Humidity	5-95%RH
Alarm Volume	80/95/ 105dB@1M , adjustable
Standby Power	≤200mA
Battery Model	4x CR123A
Protection Level	IP54
Dimension	164×164×57mm

Product usage

Add device to APP

- (1) Alarm panel must be already added to application iGET M6.
- (2) In app click "+ Add accessories" > "Add Device" > "Scan Device QR Code" and press the prompt to proceed with the subsequent operations, as shown in the screenshots.



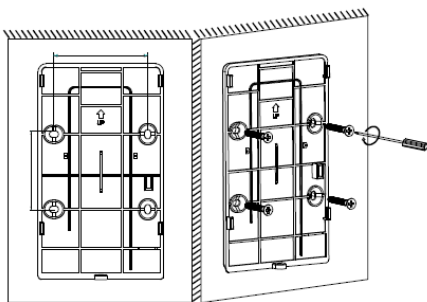
- (3) Configuration: Press and hold the configuration button for more than 3 seconds to enter the configuring mode, and the configuration light will flash.
- (4) Test method: Quickly double-click the configuration button, the siren will sound for 4 seconds, and press to stop the alarm.
- (5) Backup power switch : turn on the switch during installation.

Function Description

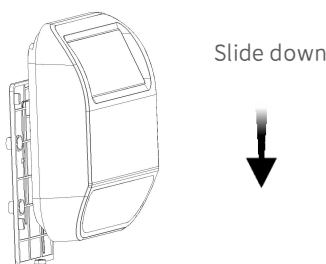
- (1) This product is suitable for indoor and outdoor use, and can be used together with alarm panel. When armed, the alarm panel will send a wireless signal to the siren, and the siren will immediately alarm. When disarming, the siren will stop alarming.
- (2) Please follow the steps to add sub devices to add this product to the alarm panel.
- (3) This product has a low voltage reminder function. When the battery voltage of the product is low, the siren will send a low voltage reminder to the alarm panel.
- (4) The alarm duration of this product can be adjusted on the APP, ranging from 3 seconds to 5 minutes.
- (5) This product has tamper function. When the siren is dismantled, it will immediately send a signal to the alarm panel to remind the user that the siren has been dismantled.

Installation instruction

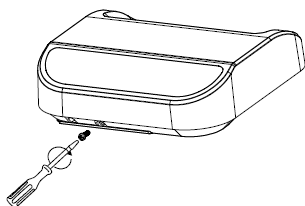
1. Loosen the bottom screw and remove the siren from the installation plate.
2. After open the product back cover, connect the adapter or install the battery, please refasten the back cover.
3. Stick the installation plate tightly to the wall, fix the position, and use the screws in the accessory package to fix the installation plate to the wall.



4. Grasp the product body and place them on the installation plate, then slide down to the installation position.



5. Use the tamper screws in the accessories bag to fix the entire body and installation plate together.



6. Installation completed.

Warranty and safety notices

- a) Do not place any heavy or sharp objects on the device.
- b) Do not expose the device to direct sunlight and heat, and both must not be covered.
- c) Do not expose the device to an environment with a temperature higher or lower than the recommended temperature.
- d) Do not expose the device to a dusty and humid environment over 85% including rain and liquids (except for outdoor cameras).
- e) Do not use any corrosive cleaning agents to clean the device.
- f) Do not expose the device to strong magnetic or electronic interference.
- g) Do not use any power adapters other than those included with the device. The supplied power supply can only be connected to an electrical outlet whose voltage corresponds to the information on the type plate of the power supply.
- h) Do not leave the power adapter in places with low combustion temperatures and on parts of the human body, as the adapter heats up and may cause injury.
- i) Do not use the device while eating or drinking.
- j) Keep the device out of the reach of children.
- k) The user is not authorized to disassemble the device or replace any of its parts. Opening or removing covers that are not originally accessible poses a risk of electric shock. Incorrect assembly and reconnection of the device also exposes you to the risk of electric shock. In the event of a necessary service intervention, contact only qualified service technicians.
- l) If the device has been in an environment with a temperature lower than -20°C for a certain period of time, leave this device switched off in a room with a temperature of 10°C to +40°C for more than one hour. Only then can you switch it on.
- m) For warranty repairs of the device, apply to your dealer. In case of technical problems and questions, contact your dealer. n) For households: The symbol (crossed-out wheeled bin) on the product or in the accompanying documentation means that used electrical or electronic products must not be disposed of with municipal waste. In order to dispose of the product correctly, hand it in at designated collection points, where it will be accepted free of charge. By disposing of this product correctly, you will help to conserve valuable natural resources and help prevent potential negative consequences for the environment and human health, which could otherwise be caused by inappropriate waste disposal. Please contact your local authorities or the nearest collection point for more details. Incorrect disposal of this type of waste may result in fines in accordance with national regulations. Information for users on disposal of electrical and electronic equipment (business and industrial use): For detailed information on the correct disposal of electrical and electronic equipment, please contact your dealer or supplier. Information for users on disposal of electrical and electronic equipment in other countries outside the European Union: The above symbol (crossed-out wheeled bin) is only valid in European Union countries. For detailed information on the correct disposal of electrical and electronic equipment, please contact your local authorities or the dealer where you purchased the equipment. This is indicated by the crossed-out wheeled bin symbol on the product, packaging or printed materials.

Not intended for use near water, e.g. near a bathtub, washbowl, kitchen sink, laundry tub, in a wet basement, or near a swimming pool (except for outdoor cameras).

Other precautions:

Follow the rules for working with electrical appliances and connect the power cord only to the appropriate electrical sockets. The user is not authorized to disassemble the device or replace any of its parts. Opening or removing covers that are not originally intended for this purpose poses a risk of electric shock. Incorrect assembly and reconnection of the device also exposes you to the risk of electric shock.

Declaration of Conformity:

Hereby, INTELEK LTD, organizační složka declares that the device type MP11 (HC-105F/K) is in compliance with Directive 2014/53/EU and others. The full EU declaration of conformity is available on the following website: www.iget.eu. The warranty period for the product is 24 months, unless otherwise stated.

RoHS:

This device meets the requirements on the restriction of the use of certain hazardous substances in electrical and electronic equipment (Government Regulation No. 481/2012 Coll., which was amended by Government Regulation No. 391/2016 Coll.) and thus the requirements of Directive 2011/65/EU of the European Parliament and of the Council on the restriction of the use of certain hazardous substances in electrical and electronic equipment. The RoHS declaration can be downloaded from www.iget.eu.

Exclusive manufacturer/importer of iGET products for the EU:

INTELEK LTD, organizační složka, Ericha Roučky 1291/4, 627 00 Brno, Czech Republic

WEB: <http://www.iget.eu>

SUPPORT: <http://www.iget.eu/helpdesk>

Copyright © 2025 INTELEK LTD. All rights reserved.

