



MP13

WIRELESS KEYPAD

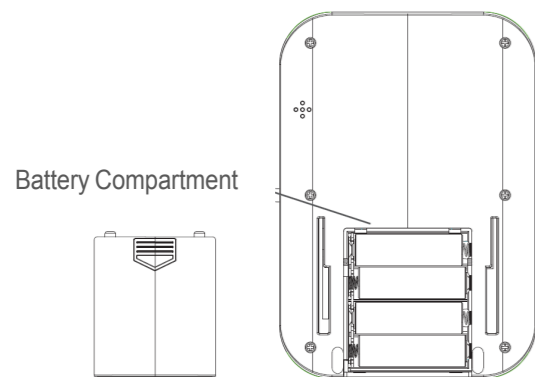
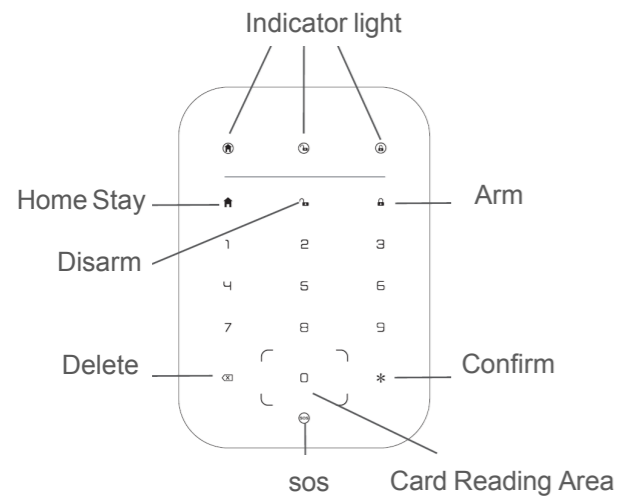
User Guide - EN

This product can be used to form an alarm package with alarm panel. It can be operated with 16 buttons to switch the status of the security system to the platform, and users can access the status of the devices through the App, add and manage the devices, and set the functions.

Packing List

- Keypad(1x)
- Expansion tube(3x)
- User manual(1x)
- AA size battery(4x)
- Bracket(1x)
- Screws(3x)

Product Diagram



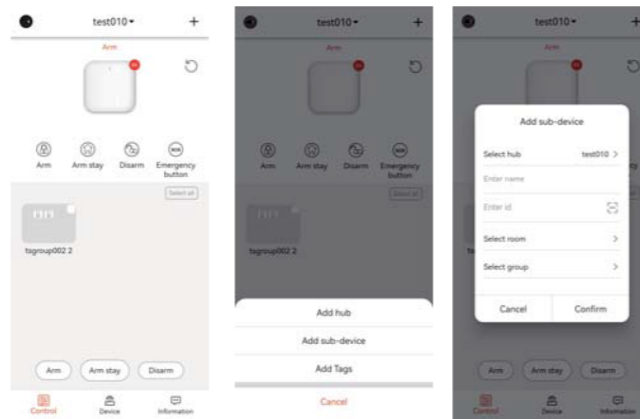
Specification

Wireless Protocol	FSK
Transmit Frequency	868 MHz
Transmit power	≤13dBm
Working Voltage	DC3V
Static Current	< 100 μA
Wireless Distance	800m (Open Area)
Working Temperature	-10°C - +55°C
Working Humidity	≤ 95 % RH
Product Size	117 x 167 x 23mm

Add device to APP

1. Add device to App

- (1) Alarm panel must be already added to application iGET M6.
- (2) In app click "+" > "Add Device" > "Scan Device QR Code" and press the prompt to proceed with the subsequent operations, as shown in the screenshots.



- (3) **Long press the "delete" and "confirm" button for 3 seconds, the green light will flash and the device enters network configuration mode.**

- (4) Wait for the alarm panel to be added successfully. Once added, the panel will send out a "ding dong" sound, if it fails, please try the above steps again.
- (5) Common button operation: After the screen lights up, the button buzzer will sound.
- (6) SOS button operation: the screen lights up, long press the SOS button for more than 3 seconds, the buzzer sounds.
- (7) Press the key to arm and disarm, and read the card to arm and disarm.
- (8) When the battery voltage is low, a warning message will be displayed on the APP.

16 keys:

- 0-9 are number keys
- 1 function key and 1 delete key.
- 3 arm and disarm keys: Arm, Arm Stay and Disarm.
- 1 emergency button.

3. Function description

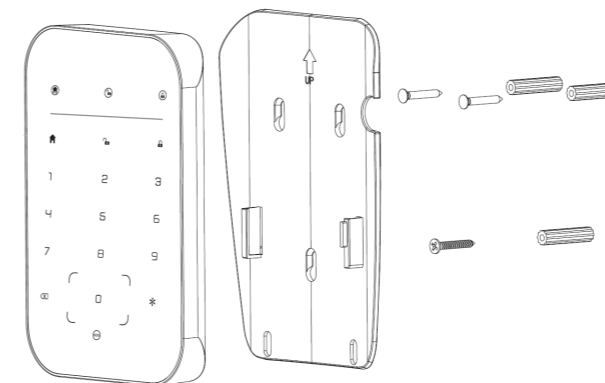
- (1) This product is used with the alarm panel. If the keypad is used for the first time or replaced, it needs to be connected with the alarm panel first.
- (2) Please follow the steps of adding sub-device to add this product to the alarm panel.
- (3) This product has a low voltage reminder function. When the battery voltage is low, the device sends a low voltage alert to the alarm panel.
- (4) This product has a sensitivity adjustment function, which can be configured through the APP.
- (5) This product has a heartbeat configuration function, which can be configured through APP 36-128s.
- (6) This product has an anti-tamper switch, and the red light will flash once when the device is tampered and send a tamper alarm message to the alarm panel.

4. Add RFID Card

- (1) Click "+" in the APP;
- (2) Choose alarm panel and keypad password;
- (3) Put the RFID card close to the sensing area until hearing the "beep" sound..

Installation

1. To install the product with the support bracket, select the wall mounting location, secure the support base to the wall with screws, and put on the screw cap.



2. Insert the main body downward into the support bracket to complete the installation.

Warranty and safety notices

- Do not place any heavy or sharp objects on the device.
- Do not expose the device to direct sunlight and heat, and both must not be covered.
- Do not expose the device to an environment with a temperature higher or lower than the recommended temperature.
- Do not expose the device to a dusty and humid environment over 85% including rain and liquids (except for outdoor cameras).
- Do not use any corrosive cleaning agents to clean the device.
- Do not expose the device to strong magnetic or electronic interference.
- Do not use any power adapters other than those included with the device. The supplied power supply can only be connected to an electrical outlet whose voltage corresponds to the information on the type plate of the power supply.
- Do not leave the power adapter in places with low combustion temperatures and on parts of the human body, as the adapter heats up and may cause injury.
- Do not use the device while eating or drinking.
- Keep the device out of the reach of children.
- The user is not authorized to disassemble the device or replace any of its parts. Opening or removing covers that are not originally accessible poses a risk of electric shock. Incorrect assembly and reconnection of the device also exposes you to the risk of electric shock. In the event of a necessary service intervention, contact only qualified service technicians.
- If the device has been in an environment with a temperature lower than -20°C for a certain period of time, leave this device switched off in a room with a temperature of 10°C to +40°C for more than one hour. Only then can you switch it on.
- For warranty repairs of the device, apply to your dealer. In case of technical problems and questions, contact your dealer. n) For households: The symbol (crossed-out wheeled bin) on the product or in the accompanying documentation means that used electrical or electronic products must not be disposed of with municipal waste. In order to dispose of the product correctly, hand it in at designated collection points, where it will be accepted free of charge. By disposing of this product correctly, you will help to conserve valuable natural resources and help prevent potential negative consequences for the environment and human health, which could otherwise be caused by inappropriate waste disposal. Please contact your local authorities or the nearest collection point for more details. Incorrect disposal of this type of waste may result in fines in accordance with national regulations. Information for users on disposal of electrical and electronic equipment (business and industrial use): For detailed information on the correct disposal of electrical and electronic equipment, please contact your dealer or supplier. Information for users on disposal of electrical and electronic equipment in other countries outside the European Union: The above symbol (crossed-out wheeled bin) is only valid in European Union countries. For detailed information on the correct disposal of electrical and electronic equipment, please contact your local authorities or the dealer where you purchased the equipment. This is indicated by the crossed-out wheeled bin symbol on the product, packaging or printed materials. Not intended for use near water, e.g. near a bathtub, washbowl, kitchen sink, laundry tub, in a wet basement, or near a swimming pool (except for outdoor cameras).

Other precautions:
Follow the rules for working with electrical appliances and connect the power cord only to the appropriate electrical sockets. The user is not authorized to disassemble the device or replace any of its parts. Opening or removing covers that are not originally intended for this purpose poses a risk of electric shock. Incorrect assembly and reconnection of the device also exposes you to the risk of electric shock.

Declaration of Conformity:
Hereby, INTELEK LTD, organizační složka declares that the device type MP13 (DKF810F/K) is in compliance with Directive 2014/53/EU and others. The full EU declaration of conformity is available on the following website: www.iget.eu. The warranty period for the product is 24 months, unless otherwise stated.

RoHS:
This device meets the requirements on the restriction of the use of certain hazardous substances in electrical and electronic equipment (Government Regulation No. 481/2012 Coll., which was amended by Government Regulation No. 391/2016 Coll.) and thus the requirements of Directive 2011/65/EU of the European Parliament and of the Council on the restriction of the use of certain hazardous substances in electrical and electronic equipment. The RoHS declaration can be downloaded from www.iget.eu.

Exclusive manufacturer/importer of iGET products for the EU:
INTELEK LTD, organizační složka, Ericha Roučky 1291/4, 627 00 Brno, Czech Republic
WEB: <http://www.iget.eu>
SUPPORT: <http://www.iget.eu/helpdesk>
Copyright © 2025 INTELEK LTD. All rights reserved.

